

Chart 3-2. Peak Daily Flows on the Cuyama River at Buckhorn (1959-2002)

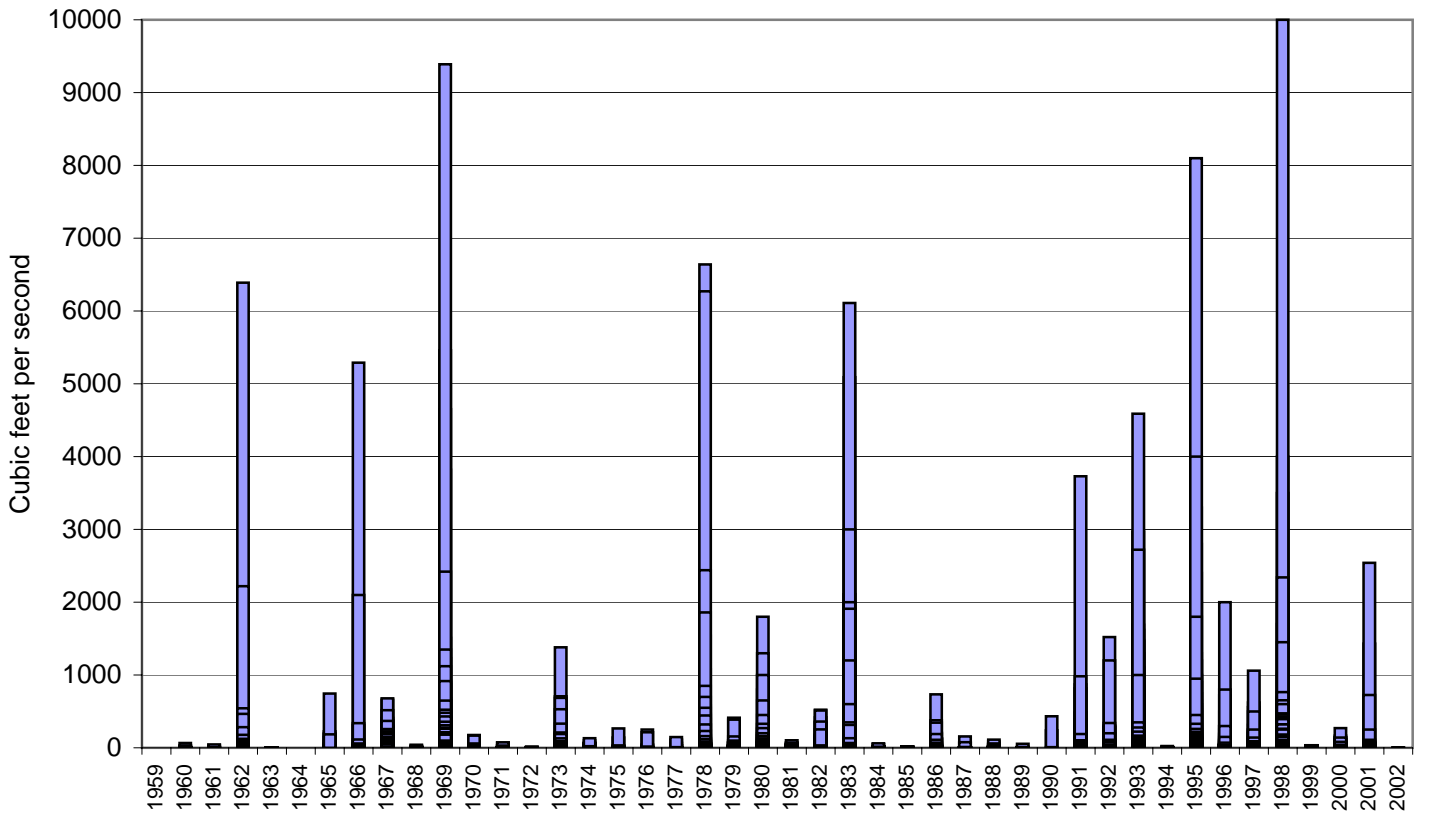


Chart 3-3. Months with High Flows, 1945-58 on the Cuyama River at Ventucopa

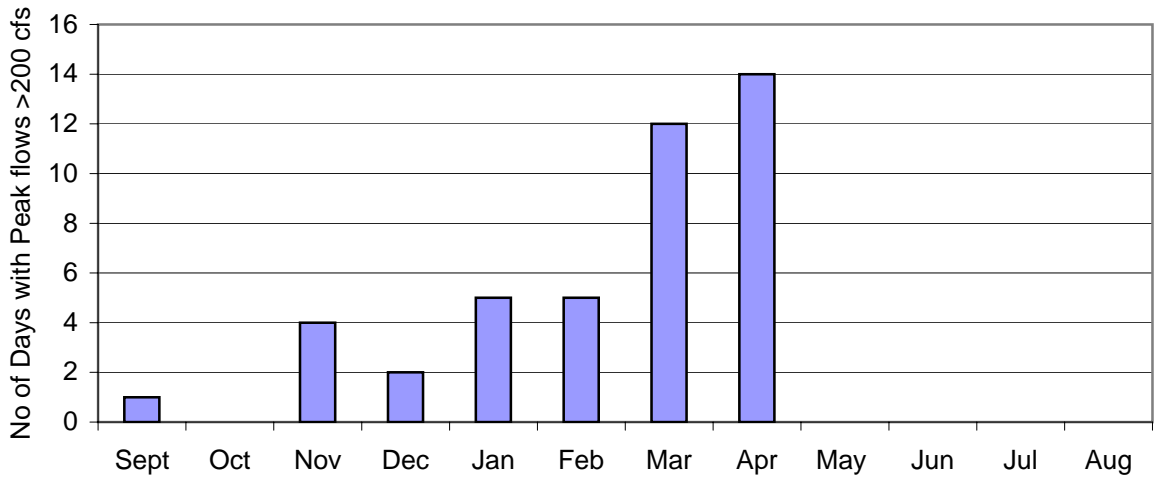


Chart 3-1. Average Monthly Runoff in the Cuyama River at Ventucopa, 1945-1958

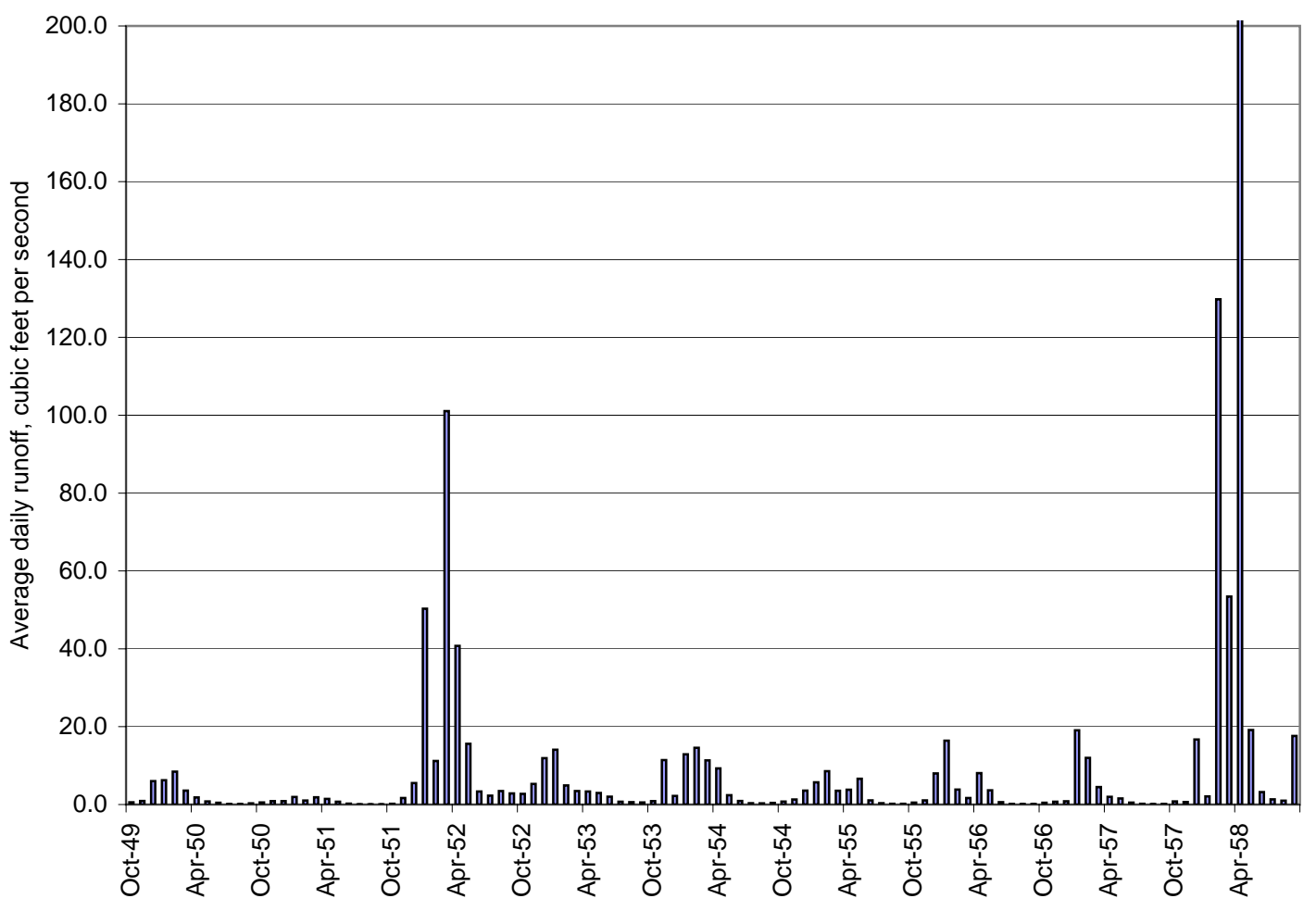


Chart 3-4. Flood Frequency Curves for Cuyama River at Ventucopa, Project Site, and Buckhorn Canyon

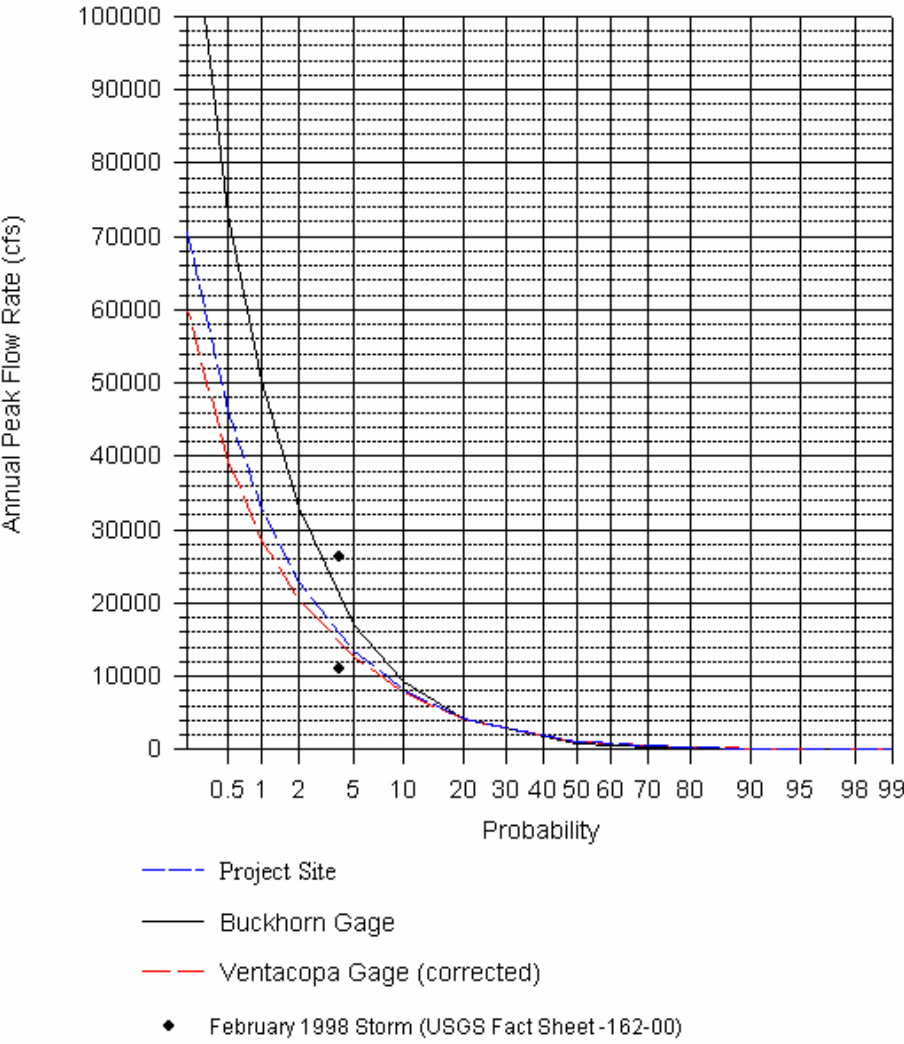


Chart 3-5. Cuyama River Profile, Headwaters to Hwy 166

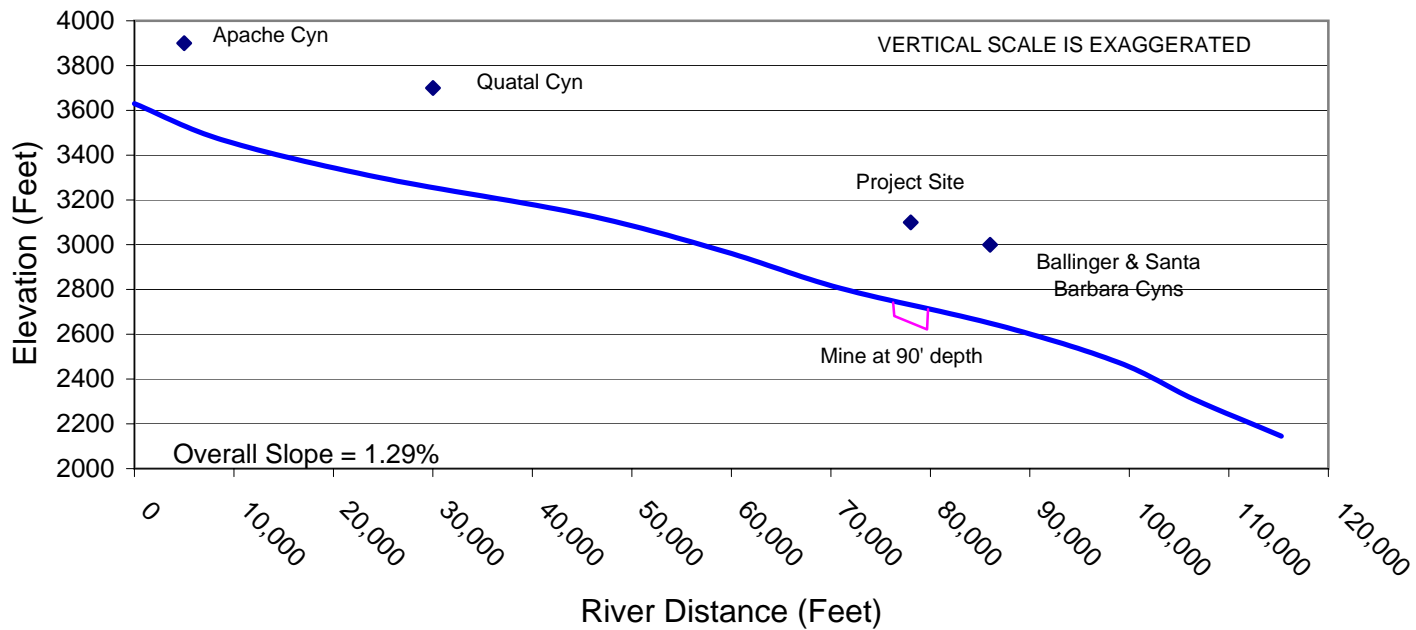
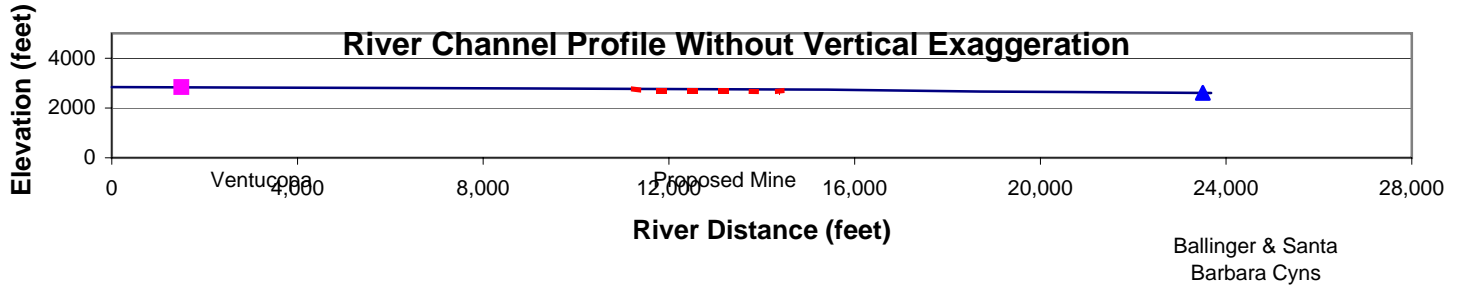
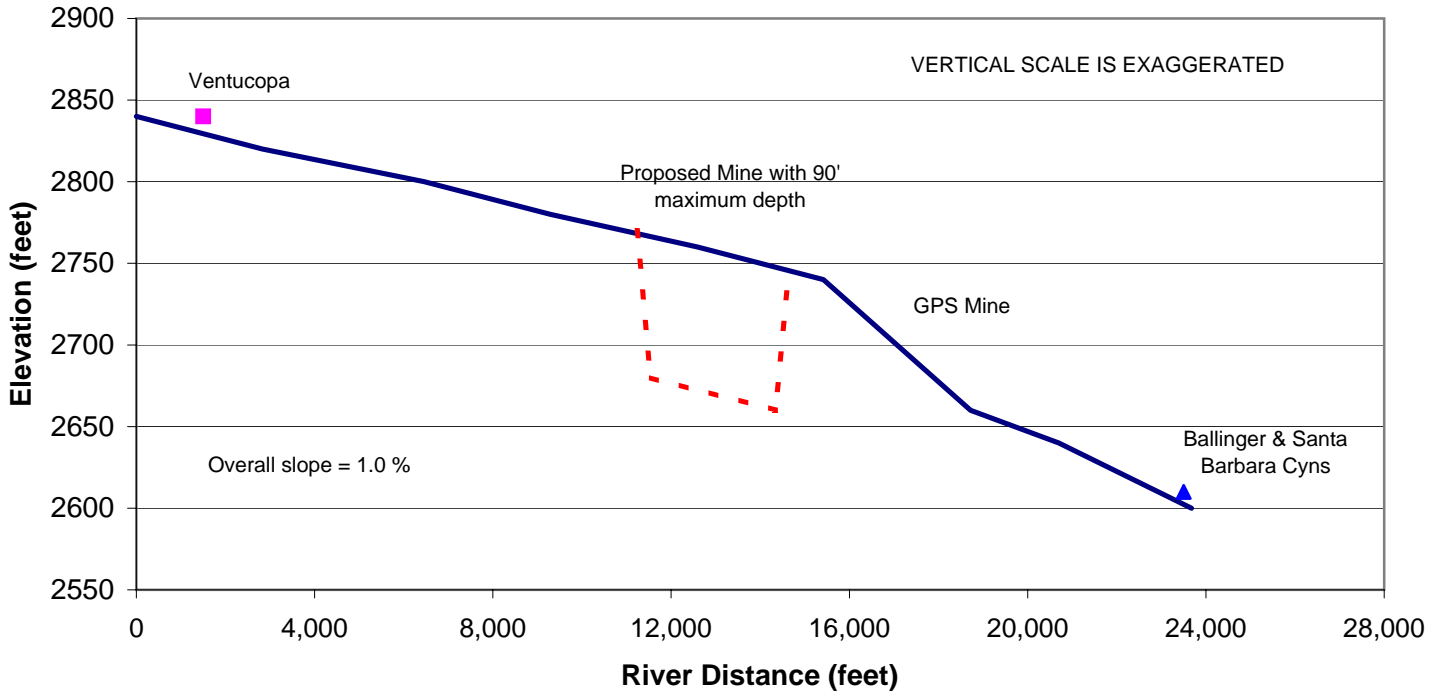
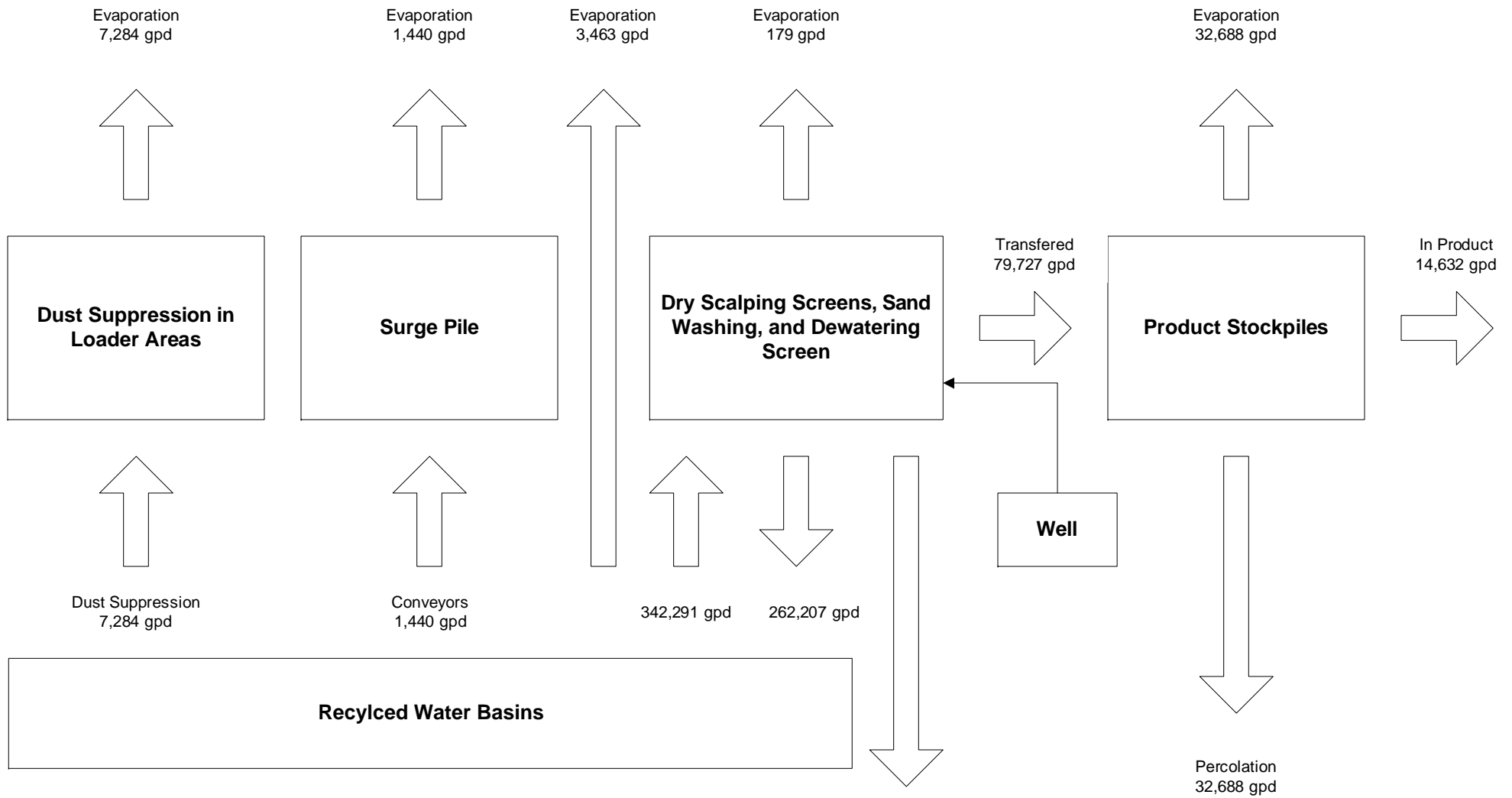


Chart 3-6. River Channel Profile, Ventucopa to Ballinger Canyon





WATER BUDGET DURING AVERAGE PRODUCTION (gallons per day)

Total water use = 351,016
 Total evaporation = 45,054
 Total percolation = 32,867
 Shipped with product = 14,632
 Total consumption = 59,686
 Net recycled = 258,744

Chart 3-7 Water Flow and Budget